

**SECOND CUP  
COFFEE HOUSE**  
APPROX. STORE AREA  
1326 SQ. FT.

**Hot Water Tank:**  
RHEEM  
MODEL NUMBER: RR612T  
ITEM NUMBER: 9015301028383  
SER. NUMBER: 0800J06700  
VOLTS 208/240  
SEE PHOTOS # 119-126 FOR DETAIL

**AREAS**

**FLOORS & CEILINGS**

FLOOR TYPE	OVERALL AREA	
CONCRETE	SALES FLOOR	1326 sq. ft.
(10% CERAMIC TILE)		711 sq. ft.
CERAMIC TILE	MEN'S ROOM	21 sq. ft.
CERAMIC TILE	LADIES ROOM	21 sq. ft.
CONCRETE	OFFICE	122 sq. ft.
VINYL TILE	SERVICE AREA	154 sq. ft.
CERAMIC TILE	BACKROOM AREA	87 sq. ft.

**HEIGHTS:**

SALES FLOOR U/S CONCRETE BEAM	15' - 7" AFF
SALES AREA U/S CONC. DECKING	16' - 4" AFF
U/S GWB (LADIES ROOM)	7' - 10" AFF
U/S GWB (MENS ROOM)	7' - 10" AFF
U/S CEILING TILE (BACK HALLWAY)	7' - 5 1/2" AFF
U/S GWB (MECH ROOM)	14' - 2" AFF
U/S METAL CEILING (COOLER)	7' - 1" AFF

**SEATING:**

CHAIR TYPE #1	SEE PHOTO #127	QT. - 10
CHAIR TYPE #2	SEE PHOTO #130	QT. - 12
CHAIR TYPE #3	SEE PHOTO #129	QT. - 14
TABLE TYPE #1	SEE PHOTO #127	QT. - 7
TABLE TYPE #2	SEE PHOTO #128	QT. - 6

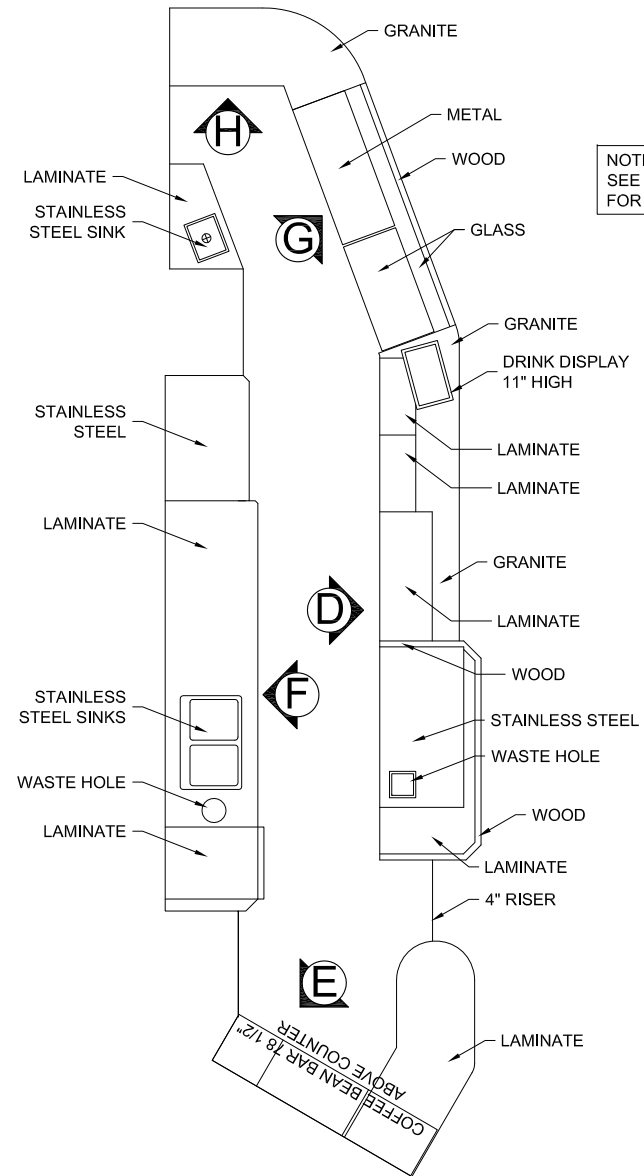
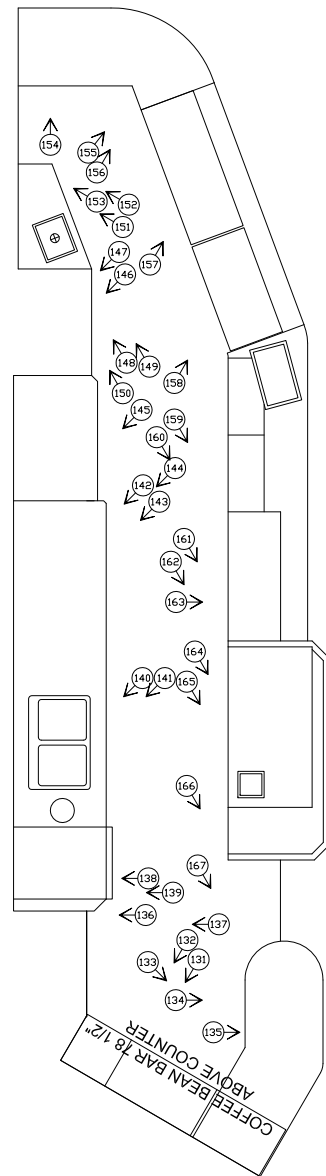
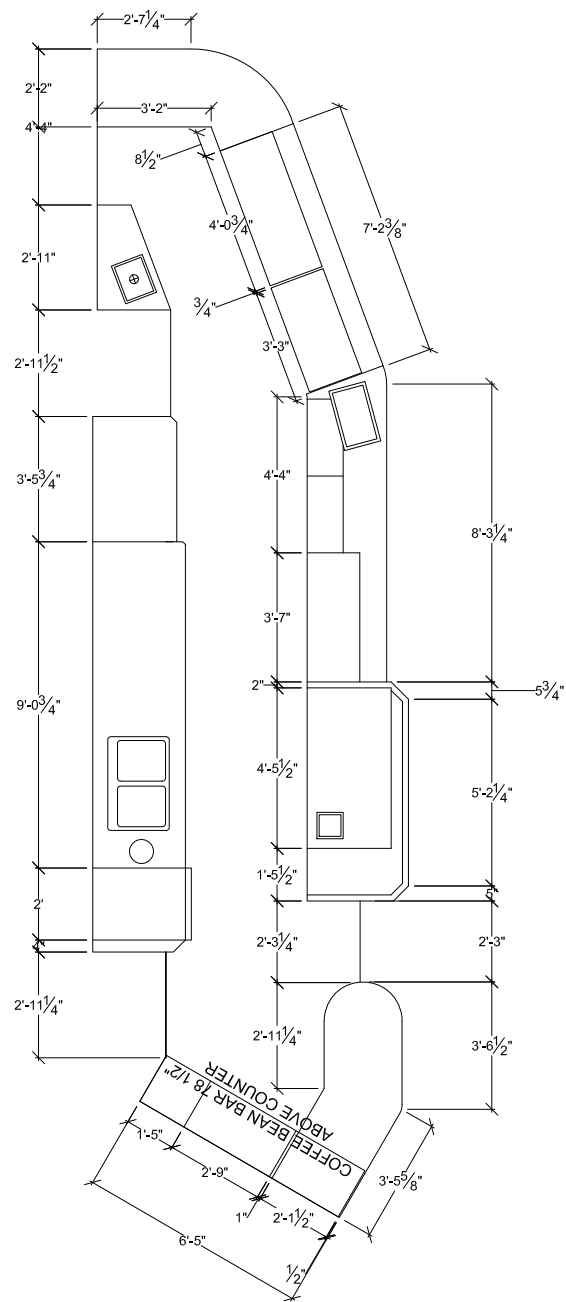


2400 Meadowpine Blvd.  
Suite 101 Mississauga, ON,  
Canada  
(416) 921-9388  
www.dedon.com

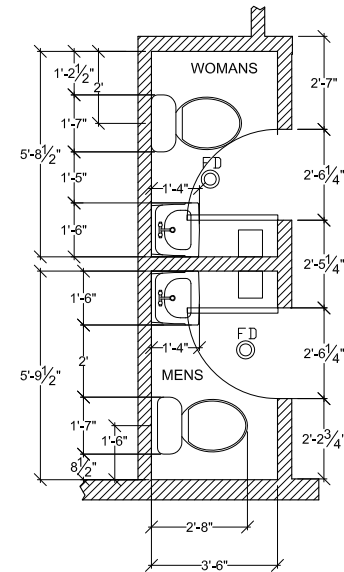
Title: **FLOOR PLAN**

Drawing No:

Approx Area: sq.ft.	Client Project #:	DLI Project #:	Surveyed By:	Drawn By:	Scale:	Date:
------------------------	-------------------	----------------	--------------	-----------	--------	-------



NOTE:  
SEE PHOTOS #400-416  
FOR MATERIAL DETAILS



**Womans Washroom Notes:**

- 1.) THE BOWL IS 16" AFF, AND THE SINK IS 33" AFF.
- 2.) THERE ARE NO GRAB BARS HERE
- 3.) THERE DOES NOT APPEAR TO BE A WET WAL.
- 4.) THERE IS NO STORAGE UNIT IN THE WASHROOM.
- 5.) DOOR HEIGHT IS 80" HIGH.
- 6.) THE HAND DRYER IS 44" AFF.

**Mens Washroom Notes:**

- 1.) THE BOWL IS 16" AFF, AND THE SINK IS 33" AFF.
- 2.) THERE ARE NO GRAB BARS HERE.
- 3.) THERE DOES NOT APPEAR TO BE AN EXTRA THICK 'WET WALL'.
- 4.) THERE IS NO STORAGE DECK ABOVE THE WASHROOM.
- 5.) DOOR HEIGHT IS 80" HIGH.
- 6.) THE HAND DRYER IS 44" AFF.

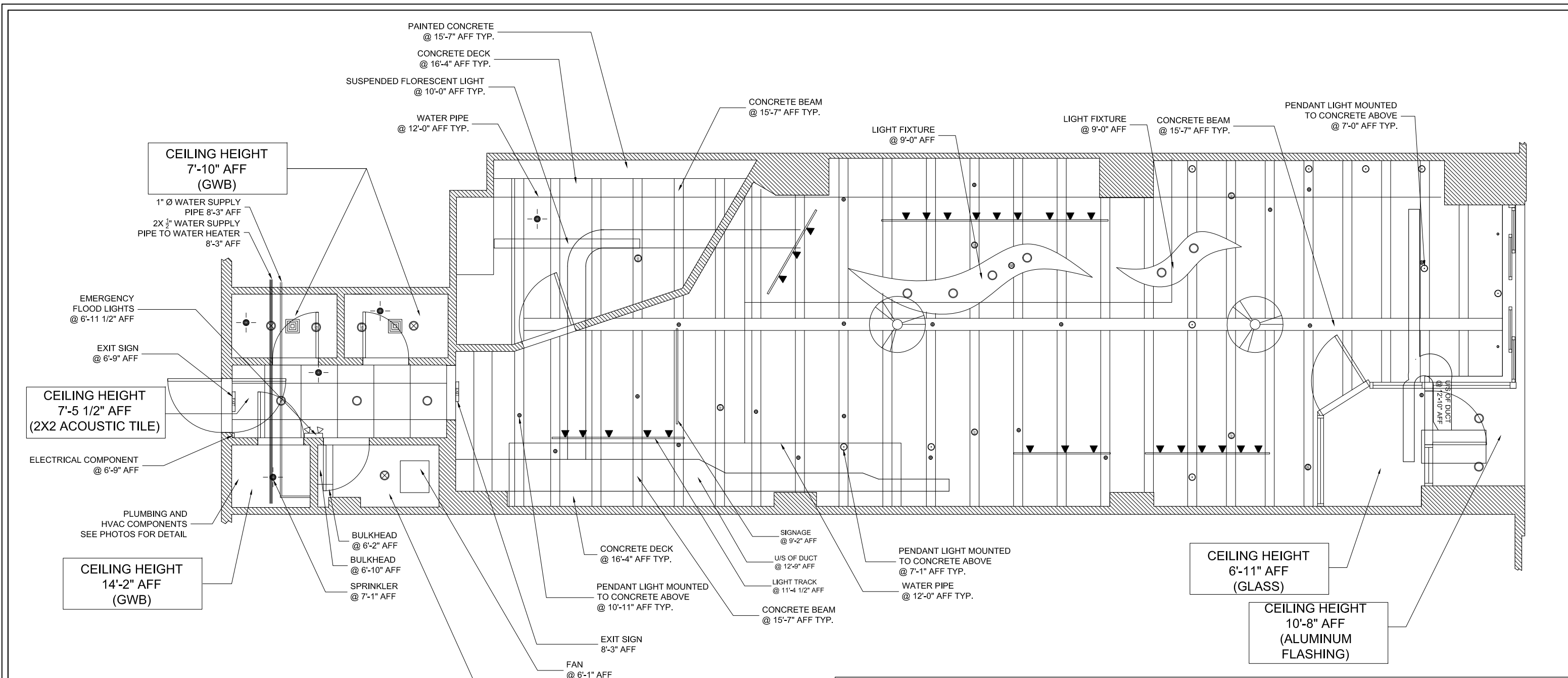
## WASHROOM INFORMATION

## COUNTER INFORMATION



2400 Meadowpine Blvd.  
Suite 101 Mississauga, ON,  
Canada  
(416) 921-9388  
www.dedon.com

Title: <b>FIXTURE PLAN</b>						Drawing No:	
Approx Area: sq.ft.	Client Project #:	DLI Project #:	Surveyed By:	Drawn By:	Scale:	Date:	



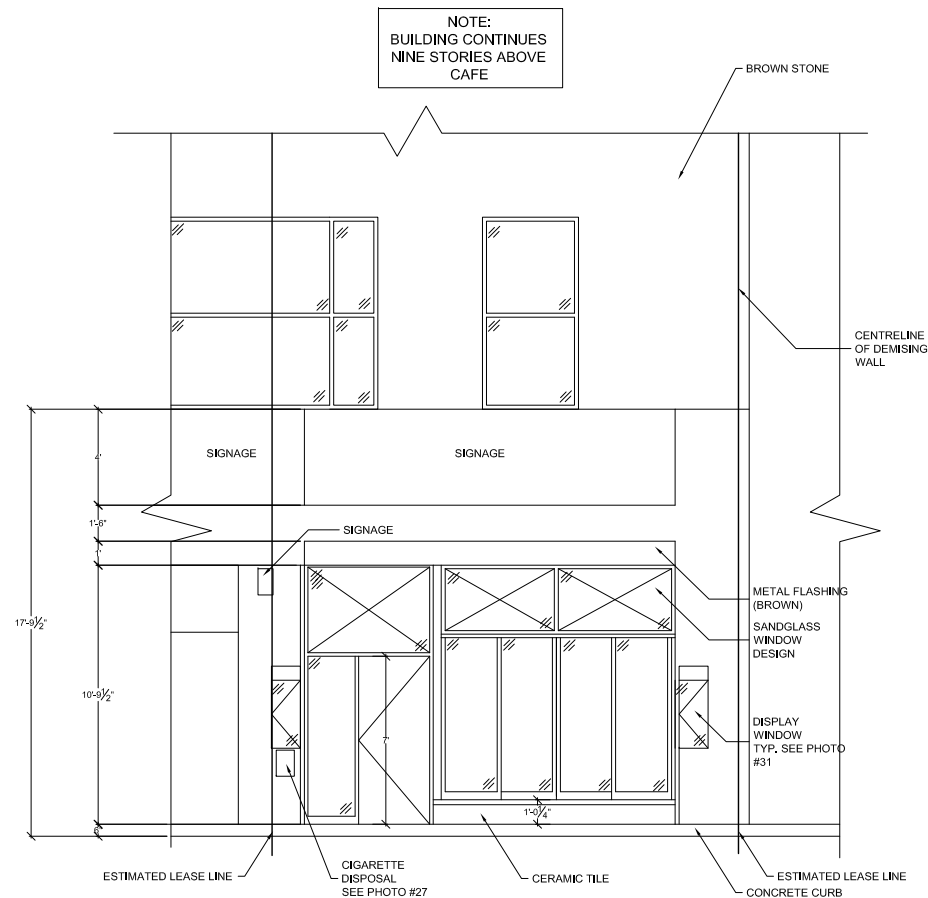
CEILING LEGEND		
2' x 4' CEILING LIGHTING		DRYWALL CEILING RECESSED LIGHTING LENS
2' x 2' CEILING LIGHTING		DRYWALL CEILING RECESSED LIGHTING SINGLE SPOT
AIR SUPPLY VENT & RETURN		DRYWALL CEILING RECESSED LIGHTING DOUBLE SPOT
WASHROOM VENT		SPRINKLER HEADS - RECESSED & PENDANT
STRIP REGISTER		SPEAKERS
		POT LIGHT & SPOT LIGHT
		LIFE SAFETY SYSTEM
		SECURITY BUBBLE
		TRACK LIGHTING
		EXIT SIGN W/ EMERG. LIGHTS
		EXIT SIGN
		EMERG. LIGHTS
		LSS @ X'-10" AFF

**DEDON**  
 2400 Meadowpine Blvd.  
 Suite 101 Mississauga, ON,  
 Canada  
 (416) 921-9388  
 www.dedon.com

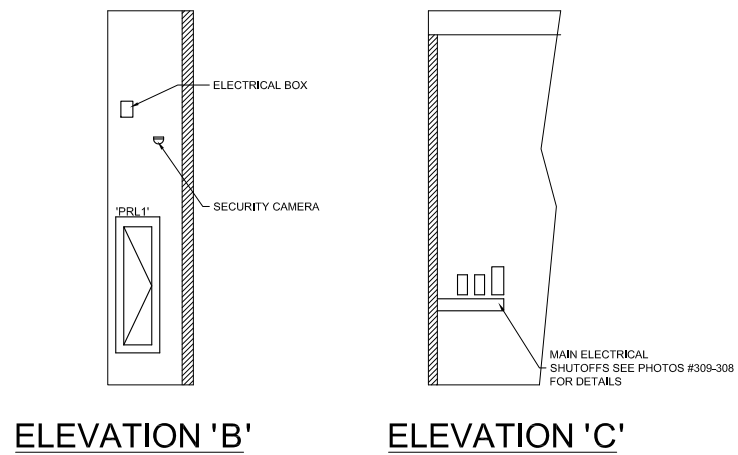
**Title:** REFLECTED CEILING PLAN

**Drawing No:**

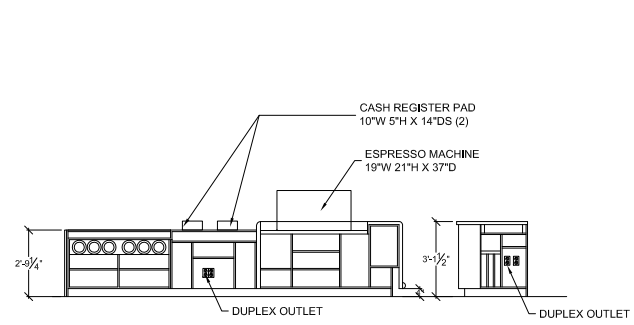
Approx Area: sq.ft.	Client Project #:	DLI Project #:	Surveyed By:	Drawn By:	Scale:	Date:
------------------------	-------------------	----------------	--------------	-----------	--------	-------



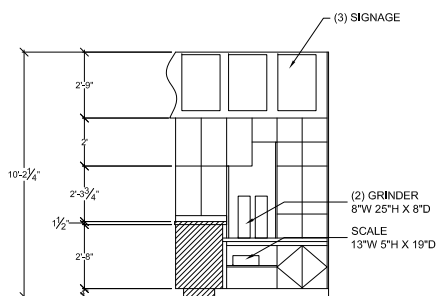
**ELEVATION 'A'**



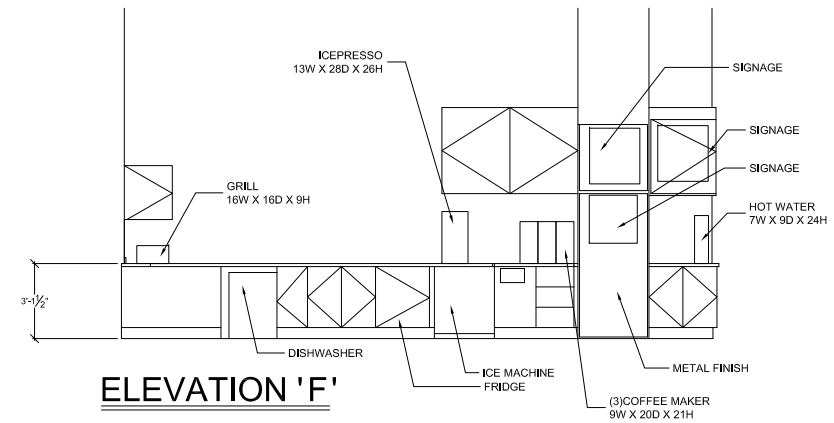
**ELECTRICAL PANEL/UNIT SPECIFICATIONS**  
 'PRL1'  
 BREAKER PANEL  
 AMENZO ELECTRIQUE INC  
 22W X 68H  
 18" AFF  
 TYPE: PRL1  
 400A, 208V  
 65/72 IN USE  
 SEE PHOTO #309-313 FOR DETAILS



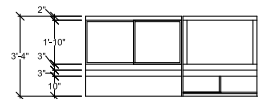
**ELEVATION 'D'**



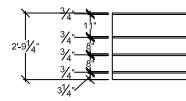
**ELEVATION 'E'**



**ELEVATION 'F'**



**ELEVATION 'G'**



**ELEVATION 'H'**



2400 Meadowpine Blvd.  
 Suite 101 Mississauga, ON,  
 Canada  
 (416) 921-9388  
 www.dedon.com

Title: **ELEVATIONS & SECTIONS**

Drawing No:

Approx Area: sq.ft.	Client Project #:	DLI Project #:	Surveyed By:	Drawn By:	Scale:	Date:
------------------------	-------------------	----------------	--------------	-----------	--------	-------